



# COLOUR STUDIO

Plug-In Filter Collection for Adobe® Photoshop®

VERSION 2.0

---

## User Guide

# License Agreement

Please read carefully before using the Software

This product is FREEWARE. You may install it on as many computers as you want! You may use it without any charge for both personal and commercial work. While every effort has been made to ensure the compatibility and stability of this application, no warranty is given on its use. Cybia is NOT liable for any damage or loss of data resulting from the use of this software.

All resources are Copyright © S.W.Upham 2009. This agreement does NOT grant you any intellectual property rights in the software. All rights reserved.

## Distribution

If you wish to host this utility on a website or include it on a CD compilation (i.e. magazine cover CD), then please contact me first for permission. All Zip file contents MUST remain intact and unmodified for distribution purposes, thank you.

## Customer Support

If you have any problems using this software or have any comments or feedback then please use the contact form at : [www.cybia.co.uk](http://www.cybia.co.uk)

# System Requirements

In order to use these plug-in filters you will need to be running Windows 7, 8, 10 or 11, plus any 32-bit host graphics application that supports the Photoshop \*.8bf format plug-in standard. These filters are for Windows only. Sorry, there is no Mac version available at the moment.

You should use a minimum screen resolution of 1024 x 768 pixels in order to view all the plug-in dialog box controls.

The filters should work on any system that is capable of running a compatible host application, but please be aware that editing large images can be very memory-intensive so make sure you have enough RAM to cope with your processing requirements.

Please note that not all graphics programs are 100% compatible with plug-in filters. Some will display the controls a bit differently or certain features may not work properly.

These filters were programmed specifically for Adobe Photoshop but should also work fine with many other host packages. Consult your program's documentation for more information regarding compatibility issues and the use of 3rd-party plug-ins.

# Installation

1. Unzip the ColourStudio.zip file to a suitable folder on your hard drive.
2. Make sure you select your Photoshop (or other host) "Plug-Ins" folder.
3. Start your graphics program and configure it to look in that folder for extra plug-ins (not all software will require this step, please refer to the instructions given with your host).
4. Exit your program and re-start in order for your configuration settings to take effect.
5. Open an image ready to edit, making sure it is in RGB mode.
6. The plug-ins should now be available from the "Filter" menu in the "Colour Studio" section.

To uninstall the program, delete the folder containing the files and any links you created.

Please read the documentation that came with your graphics software for more information regarding the installation and use of plug-in filters. Thank you.

# HotShot Filter

HotShot will help you quickly access a selection of image enhancement controls through one easy-to-use dialog. The effects are suitable for digital photographs, scanned artwork and 3D rendered images, providing a whole range of features from subtle colour correction to more dynamic effects for added impact or artistic results.

The filter is capable of creating thousands of different colour variations, so please take some time to experiment with all the slider combinations in order to become more familiar with how they react with each other. It is a good idea to save any presets that you like so you can quickly re-use the same effects later with other images.

## Feature Overview

- \* 18 sliders which allow many different combinations
- \* Reset buttons to quickly return default values
- \* Random buttons to experiment with settings
- \* Save and load your favourite effect presets
- \* Zoom buttons with common percentages
- \* 70 example preset files included to get you started

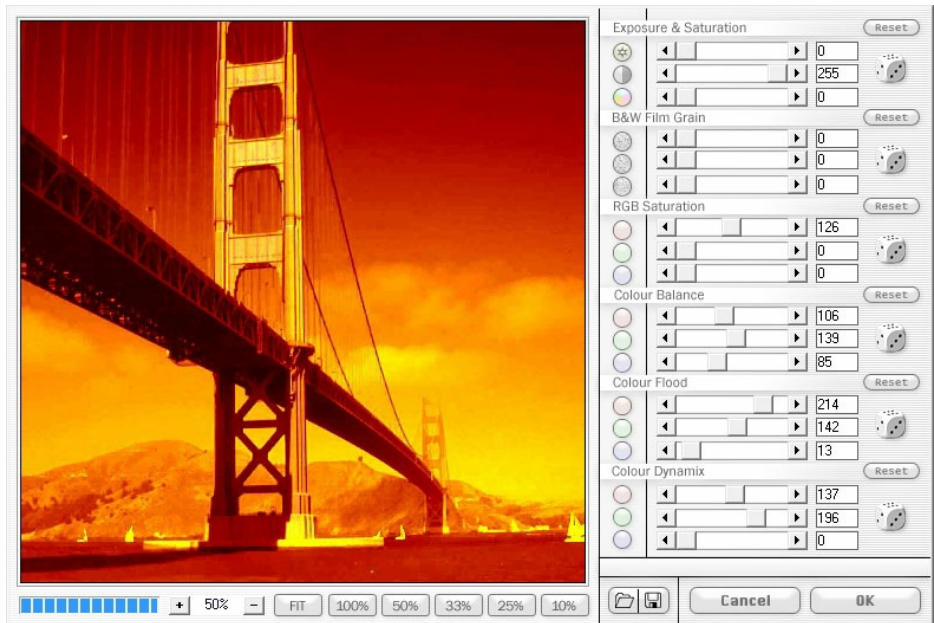
## Slider Controls

- \* Exposure & Saturation : Brightness, contrast and saturation
- \* B&W Film Grain : Add realistic monochromatic noise
- \* RGB Saturation : Saturation levels of individual channels
- \* Colour Balance : Modify overall tint and tone
- \* Colour Flood : Strong colour cast/replacement
- \* Colour Dynamix : Invert channels plus intense shift

## Compatible Image Modes

- \* RGB 8 bit mode (24 bit images)
- \* RGB 16 bit mode (48 bit images)

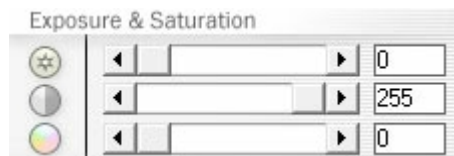
HotShot Dialog : The screenshot below shows the plug-in dialog layout. The left-hand side shows a large preview of your image, with a progress bar and zoom buttons underneath. The preview will update as you change the settings.



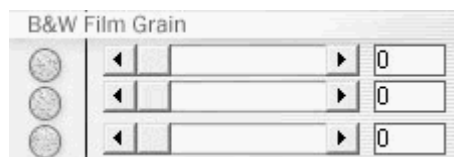
*Screenshot of HotShot running on Adobe Photoshop and Windows Vista*

On the right-hand side you will find the sliders that control the various filter effects, plus "Reset" and "Random" buttons. There are also "Load" and "Save" buttons for filter presets, plus the usual "Cancel" and "OK".

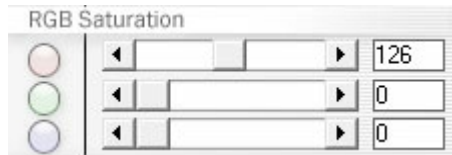
**Exposure Sliders :** The first three controls will help you quickly correct the brightness, contrast and saturation in your images.



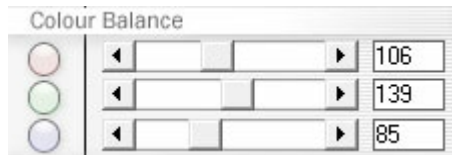
**Grain Sliders :** If you want to simulate traditional film grain in your digital photos then use these sliders in various combinations.



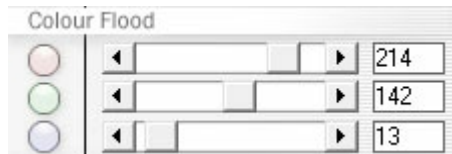
Saturation Sliders : You can also adjust the saturation of the red, green and blue channels individually if you need more control in this area.



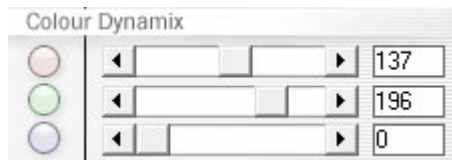
Balance Sliders : Change the overall colour balance by mixing the red, green, blue, cyan, magenta and yellow combinations.



Flood Sliders : For a stronger colour cast then use the flood settings to produce an intense overlay of your chosen colour.



Dynamix Sliders : These sliders can be used to invert the colour channels plus create dynamic colour shifts when used with other settings.



Reset Buttons : Return the slider settings to their default values.



Random Buttons : Click on the dice images to change slider settings.



Load/Save : Click to load or save your favourite settings.



Zoom : In/out.

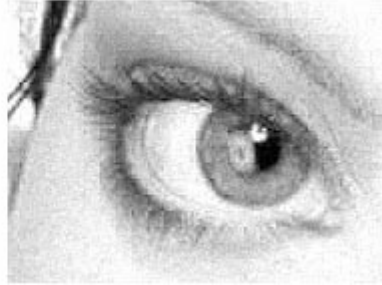


Cancel/OK : Exit or apply the effects.



Sample Effects : It is impossible to show you everything that the plug-in is capable of in this quick reference guide, but here are a few basic examples to give you some idea of common effects...

Classic B&W : Convert colour photos into traditional black and white.



Boost Colours : For added impact and artistic effects.



Limit Colours : Reduce the saturation of specific areas.





Tone & Tint : Give your images an overall colour or mono cast.



Fix Bad Exposures : Adjust the brightness and contrast.



Dynamic Colour : Create interesting and fun pop-art effects.



HotShot is suitable for use with all kinds of different images and subject matter, including landscape and architecture photographs, portraits, computer graphics and much more. This filter should cover most of your colour-editing needs!

# RetroGrade Filter

RetroGrade will help you recreate classic effects as if you were shooting with traditional black & white film. This filter offers a quick and easy way to convert your colour photos to a more traditional look with artistic quality!

The most useful feature is the RGB Optical Filter sliders which affect the colour response during greyscale conversion, similar to using coloured lens filters with B&W film : for example, a red filter will lighten the red, magenta and yellow areas plus darken the green, blue and cyan in the photo. You can simulate strong infra-red style B&W photos for greater impact, but also mix the green and blue channels at the same time for maximum control over the tonal range. Add to this the monochromatic film grain and you are able to create photos that have the look and feel of traditional media. This product is particularly effective on landscape photographs.

## Feature Overview

- \* 11 sliders which allow many different combinations
- \* Reset buttons to quickly return default values
- \* Random buttons to experiment with settings
- \* Save and load your favourite effect presets
- \* Zoom buttons with common percentages
- \* 70 example preset files included to get you started

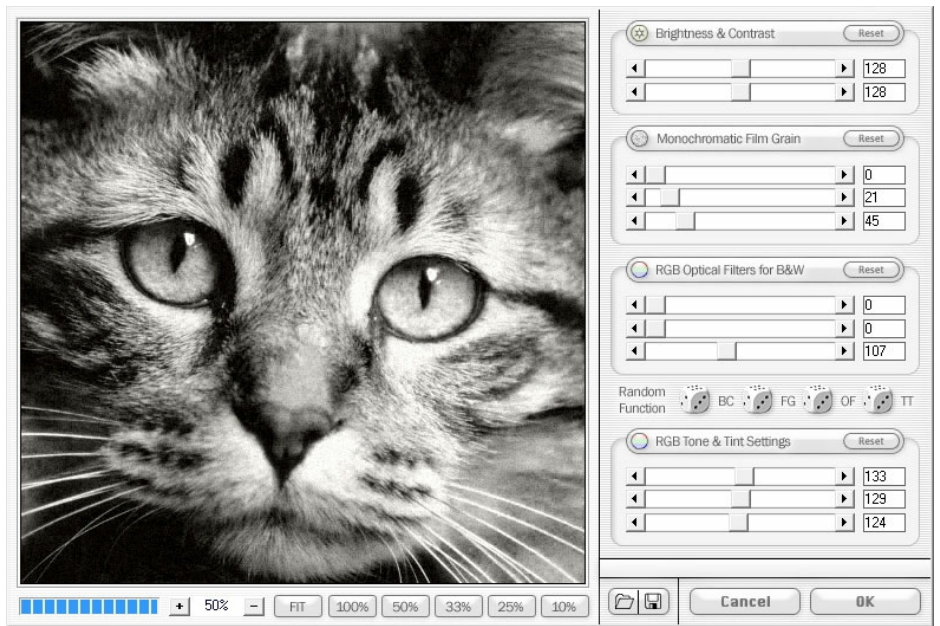
## Slider Controls

- \* Brightness and Contrast : Quick exposure fix settings
- \* Monochromatic Film Grain : Simulate real film grain
- \* RGB Optical Filters for B&W : Modify colour response
- \* RGB Tone & Tint Settings : Add overall colour cast

## Compatible Image Modes

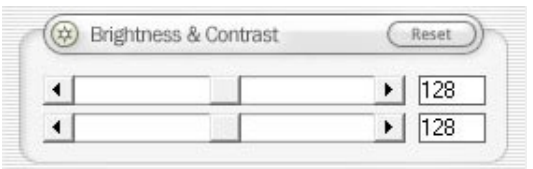
- \* RGB 8 bit mode (24 bit images)
- \* RGB 16 bit mode (48 bit images)

RetroGrade Dialog : The screenshot below shows the plug-in dialog layout. The left-hand side shows a large preview of your image, with a progress bar and zoom buttons underneath. The preview will update as you change the settings.

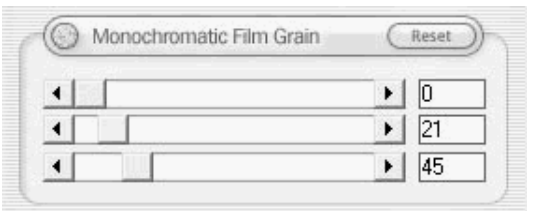


On the right-hand side you will find the sliders that control the various filter effects, plus "Reset" and "Random" buttons. There are also "Load" and "Save" buttons for filter presets, plus the usual "Cancel" and "OK".

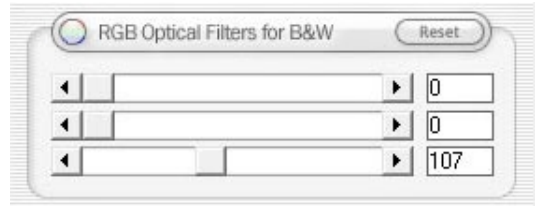
Brightness and Contrast : The first two controls will help you quickly correct the overall brightness and contrast in your images.



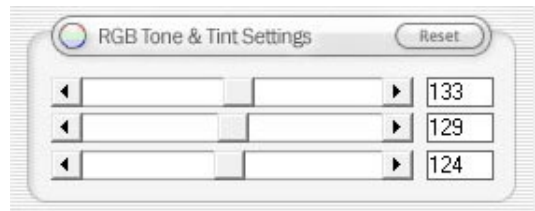
Grain Sliders : If you want to simulate mono film grain in your digital photos then use these sliders in various combinations.



Optical Sliders : You can replicate the use of coloured lens filters with traditional black & white film using these sliders. For example, adding a red filter will lighten the red, magenta and yellow areas plus darken the green, blue and cyan in the photo. A slider value of 64 will produce a standard optical effect but if you raise the intensity it will create more dynamic "infra-red" style effects which are ideal for added impact.



Tone Sliders : Change the overall colour balance by mixing the red, green, blue, cyan, magenta and yellow combinations.



Reset Buttons : Return the slider settings to their default values.



Random Buttons : Click on the dice images to change slider settings.



Load/Save : Click to load or save your favourite settings.



Zoom : In/out.



Cancel/OK : Exit or apply the effects.



Sample Effects : It is impossible to show you everything that the plug-in is capable of in this quick reference guide, but here are a few basic examples to give you some idea of common effects...

Optical Filters : This shows the original colour photo and example of a standard desaturate effect produced by most image editors. Note that the mono version is quite dull and lacks any real impact.



Traditional photographers who are familiar with using coloured lens filters with black & white film will appreciate this easy way to replicate the effect digitally. Take any colour photo and mix the RGB optical sliders to change the colour response and achieve the desired tonal range. Using these controls you can create much more dynamic shots! Remember to adjust the brightness and contrast sliders in order to achieve the best exposure settings.

Compare the images below (red filter, green filter, blue filter) with the standard desaturate result and you will notice how each filter reacts with the image colours. For example, using the optical red setting will darken the sky area while optical blue will produce the reverse effect. A green setting is good for lightening trees and foliage areas.





**Film Grain :** There are three sliders which allow you to add traditional film style grain for a more artistic retro effect. You can use each setting by itself or mix the sliders for more variations. This is more realistic than just adding a standard "noise" effect in your image editor.



**Tone Variations :** You can also give your image an overall coloured overlay if you require, just like traditional darkroom effects. Produce old style sepia prints or any other colour variation by mixing the RGB settings.



**Intense Colour :** It is also possible to produce more extreme colour variations by experimenting with all the different slider settings. This may be useful if you want to create more dramatic or artistic results.



**Many Different Uses :** RetroGrade is suitable for use with many kinds of images, including landscape and architecture photographs, portrait work, computer graphics and 3D renders. This filter should cover most of your monochromatic needs!

# Fluoron Filter

Fluoron is based on a kind of ultra-violet/fluorescent style colour shift but also offers many other variations for interesting and unusual results.

The filter is not meant to reproduce any real-world colour wavelengths, it is only intended for artistic effect and fun experimental conversions. It offers a quick method for creating vibrant and dynamic images when you need something with a bit more impact!

## Feature Overview

- \* 11 sliders which allow many different combinations
- \* 12 radio buttons and 3 check box controls
- \* Reset buttons to quickly return default values
- \* Random buttons to experiment with settings
- \* Save and load your favourite effect presets
- \* Zoom buttons with common percentages
- \* 80 example preset files included to get you started

## Slider Controls

- \* Exposure : Quick fix to the brightness and contrast
- \* Film Grain : Simulate real (monochromatic) film grain
- \* Fluoron Conversion : Main effect for shifting colour values
- \* Colour Balance : Modify RGB colour balance/saturation

## Other Controls

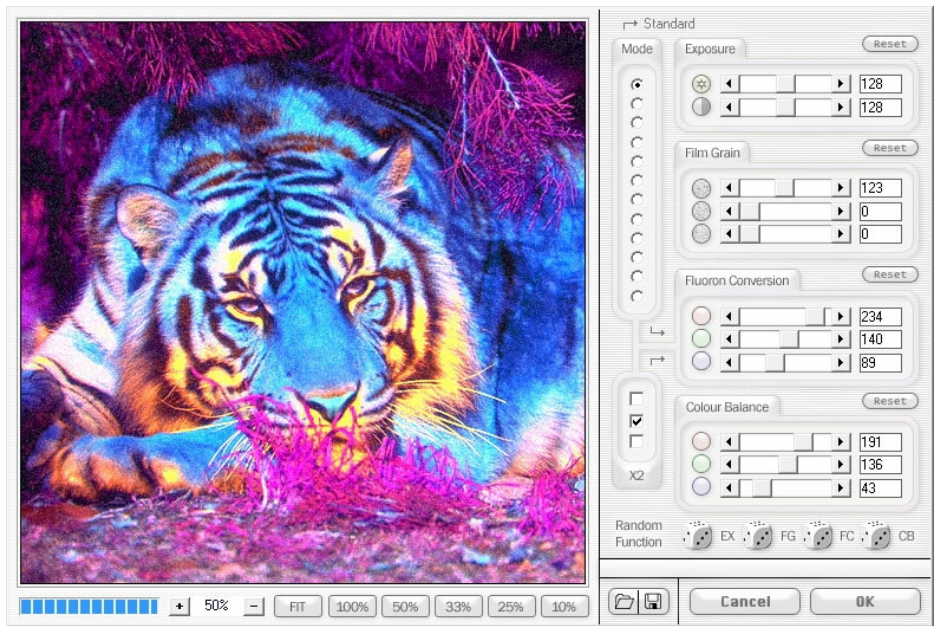
- \* Mode : 12 radio buttons for additional colour-swapping
- \* X2 : 3 check boxes to boost/double the Fluoron slider values

## Compatible Image Modes

- \* RGB 8 bit mode (24 bit images)
- \* RGB 16 bit mode (48 bit images)

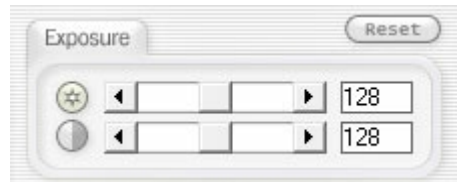


Fluoron Dialog : The screenshot below shows the plug-in dialog layout. The left-hand side shows a large preview of your image, with a progress bar and zoom buttons underneath. The preview will update as you change the settings.

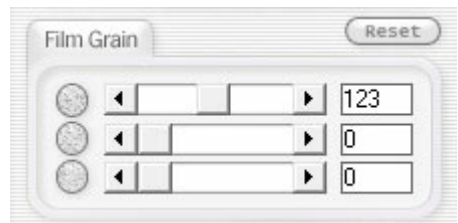


On the right-hand side you will find the sliders that control the various filter effects, plus "Reset" and "Random" buttons. There are also "Load" and "Save" buttons for filter presets, plus the usual "Cancel" and "OK".

Exposure : The first two controls will help you quickly correct the overall brightness and contrast in your images.



Grain Sliders : If you want to simulate film grain in your digital photos then use these sliders in various combinations. The first two settings produce a white grain, and the third adds a black grain.

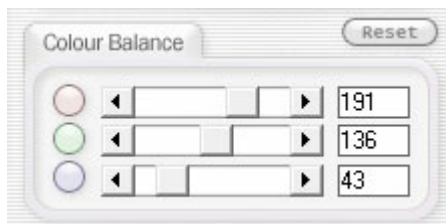
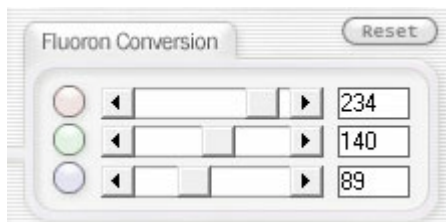


Fluoron Sliders : Colour translation effect using the red, green and blue channels for extra variation.

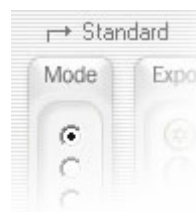
Colour Sliders : Modify the overall colour balance by mixing the red, green, blue, cyan, magenta and yellow combinations.



X2 : These are linked to the Fluoron Conversion sliders and "boost" (double) the strength of the effects. Use when you need extra impact on certain images. You can use each RGB channel boost individually or mix them for any desired combination.



Mode : Choose from 12 initial colour variations. The default "Standard" won't change the image at all until you modify the slider settings, but the other options will "swap" colour channels for even more effects.



Reset Buttons : Return the slider settings to their default values.



Random Buttons : Click on the dice images to change slider settings.



Load/Save : Click to load or save your favourite settings.



Zoom : In/out.



Cancel/OK : Exit or apply the effects.



Sample Effects : It is impossible to show you everything that the plug-in is capable of in this quick reference guide, but here are a few basic examples to give you some idea of common effects...

Portraits : Surreal skintones.



Snapshots : Unusual colour toning.



Landscapes : High-impact scenery.



Objects : Cool lighting effects.



Animals : Wild transformations.



Fluoron is suitable for use with all kinds of different images and subject matter, including landscape and architecture photographs, portraits, computer graphics and much more. Explore a new world of unusual colours!

# Alienator Filter

Alienator takes an alternative approach to colour-modification effects by generating random combinations of many hidden variables to produce unusual and unpredictable results.

## Feature Overview

- \* Animated random feature with variable speed
- \* Manual random controls allow further changes
- \* Hidden variables allow many different combinations
- \* Single undo for return to previous setting
- \* Reset button to quickly return default values
- \* Save and load your favourite effect presets
- \* Zoom buttons with common percentages
- \* 100 example preset files included to get you started

## Random Buttons

- \* Start/Stop : Animated generation feature
- \* Randomize All : Manually randomize ALL values
- \* Dice : Semi-randomizers for partial effects
- \* + (plus) : Randomize selected values only
- \* - (minus) : Reset selected values to default
- \* Reset All : Restore ALL default settings

## Other Controls

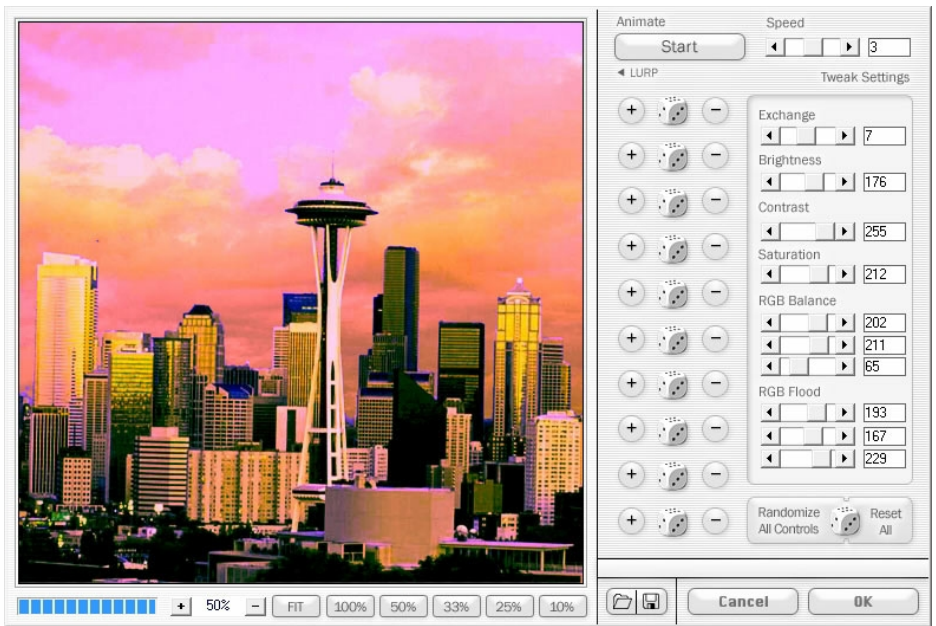
- \* Tweak Settings : 10 main slider controls
- \* Speed : Adjust the speed of the animated preview
- \* LURP : Last-Used-Random-Preset (undo feature)

## Compatible Image Modes

- \* RGB 8 bit mode (24 bit images)
- \* RGB 16 bit mode (48 bit images)

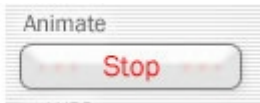


Alienator Dialog : The screenshot below shows the plug-in dialog layout. The left-hand side shows a large preview of your image, with a progress bar and zoom buttons underneath. The preview will update as you change the settings.



On the right-hand side you will find the sliders that control the various filter effects, plus "Reset" and "Random" buttons. There are also "Load" and "Save" buttons for filter presets, plus the usual "Cancel" and "OK".

Animate : If you would like the filter to automatically generate random presets for you then click on the "Start" button to begin. The button image changes to "Stop" and the preview window will update with new effects at the selected speed. When you see a setting that you like, click the button again to stop the animated feature.



Speed Slider : You can adjust how fast the animated feature generates each new setting by choosing a speed value from 1 (slow) to 5 (fast).



LURP Feature : Last-Used-Random-Preset. A single undo which returns the previous setting. This is useful if you didn't click the stop button fast enough and missed an effect that you liked.



Randomize/Reset All : Click the left button to manually randomize ALL settings once only. Click the right button to reset ALL values.

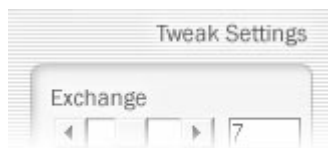


Semi-Randomizers : If you click any of the "Dice" buttons it will randomize ONLY the partial settings for each particular section and reset all the other values to default.



Click the "+" buttons to randomize ONLY the partial settings for each particular section but NOT change all the other current values. Click the "-" buttons to reset ONLY the partial settings back to default for each particular section but NOT change the other values

Tweak Settings : This gives you access to 10 sliders for greater control over the final effect. You can modify the brightness, contrast, saturation and RGB balance, plus swap channels and produce more intense colour casts.



Load/Save : Click to load or save your favourite settings.



Zoom : In/out.



Cancel/OK : Exit or apply the effects.



Sample Effects : It is impossible to show you everything that the plug-in is capable of in this quick reference guide, but here are a few basic examples to give you some idea of common effects...

Pets : Alienize your cats and dogs!



Wildlife : Get even weirder results with other creatures.





Portraits : Artistic styles for illustration work



Architecture : Shocking colour variations



Photos : Turn your holiday snaps into pop-art style effects.



Alienator is suitable for use with all kinds of different images and subject matter, including landscape and architecture photographs, portraits, computer graphics and much more. Have fun experimenting!

# Vivida Filter

Vivida provides a quick and easy way to boost the brightness, contrast and saturation values in each individual channel. Ideal for when you need to add impact to any photos that are underexposed or have dull lifeless colours.

## Feature Overview

- \* 9 sliders split into 3 channel groups
- \* Reset buttons to quickly return default values
- \* Random buttons to experiment with settings
- \* Save and load your favourite effect presets
- \* Zoom buttons with common percentages
- \* 20 example preset files included to get you started

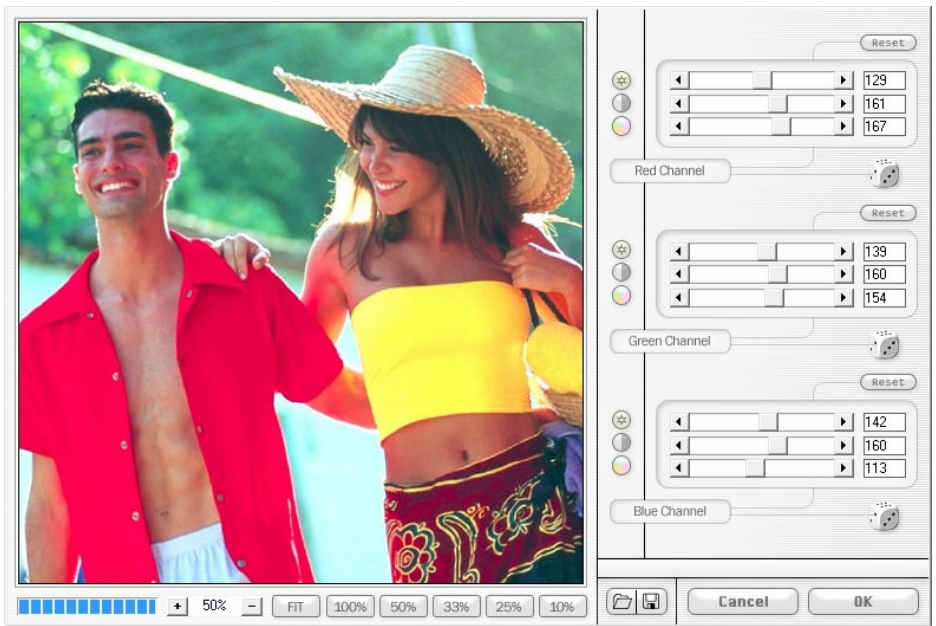
## Slider Controls

- \* Brightness : Modify brightness in the red channel only
- \* Contrast : Modify contrast in the red channel only
- \* Saturation : Modify saturation in the red channel only
  
- \* Brightness : Modify brightness in the Green channel only
- \* Contrast : Modify contrast in the Green channel only
- \* Saturation : Modify saturation in the Green channel only
  
- \* Brightness : Modify brightness in the Blue channel only
- \* Contrast : Modify contrast in the Blue channel only
- \* Saturation : Modify saturation in the Blue channel only

## Compatible Image Modes

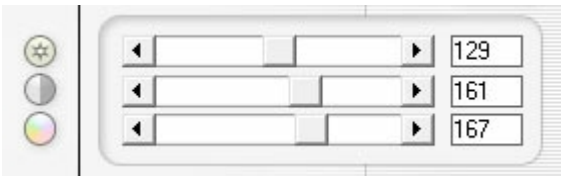
- \* RGB 8 bit mode (24 bit images)
- \* RGB 16 bit mode (48 bit images)

Vivida Dialog : The screenshot below shows the plug-in dialog layout. The left-hand side shows a large preview of your image, with a progress bar and zoom buttons underneath. The preview will update as you change the settings.

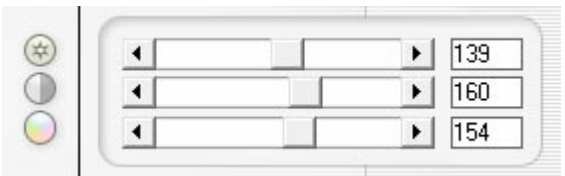


On the right-hand side you will find the sliders that control the various filter effects, plus "Reset" and "Random" buttons. There are also "Load" and "Save" buttons for filter presets, plus the usual "Cancel" and "OK".

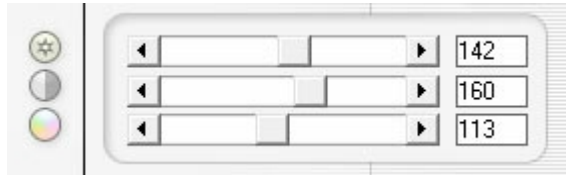
Red Channel : The first slider changes brightness, the second slider is for contrast and the third slider modifies the saturation level.



Green Channel : The first slider changes brightness, the second slider is for contrast and the third slider modifies the saturation level.



Blue Channel : The first slider changes brightness, the second slider is for contrast and the third slider modifies the saturation level.



Reset Buttons : Return the slider settings to their default values.



Random Buttons : Click on the dice images to change slider settings.



Load/Save : Click to load or save your favourite settings.



Zoom : In/out.



Cancel/OK : Exit or apply the effects.



Sample Effects : It is impossible to show you everything that the plug-in is capable of in this quick reference guide, but here is a quick example to give you some idea of how vivid you can make your colours...

Maximum Impact : Push saturation levels to the extreme.

